

**The Monterey County Historical Society**  
**&**

**The Pat Hathaway Collection**

~~~~

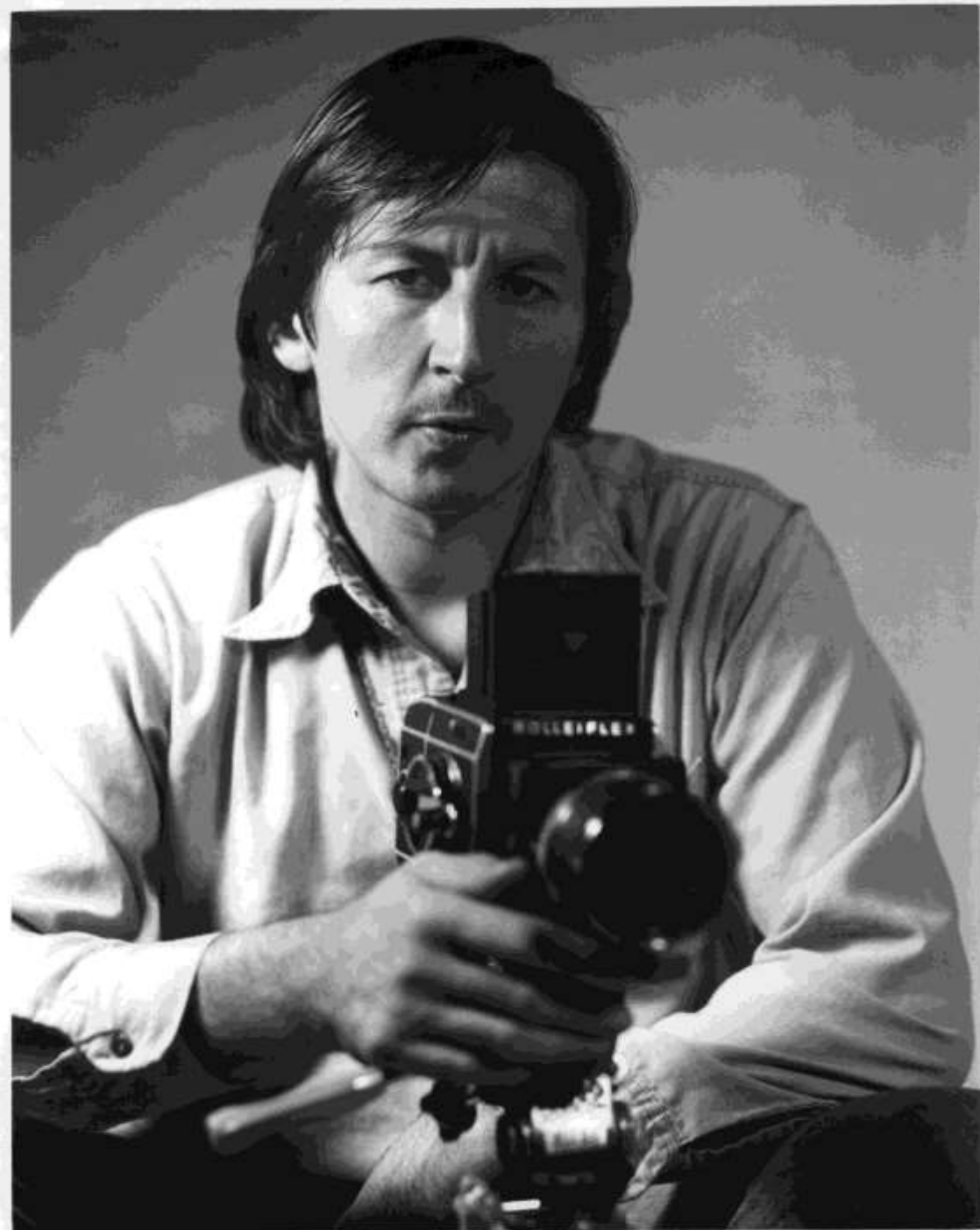
**Carmel Residents Association**

~~~

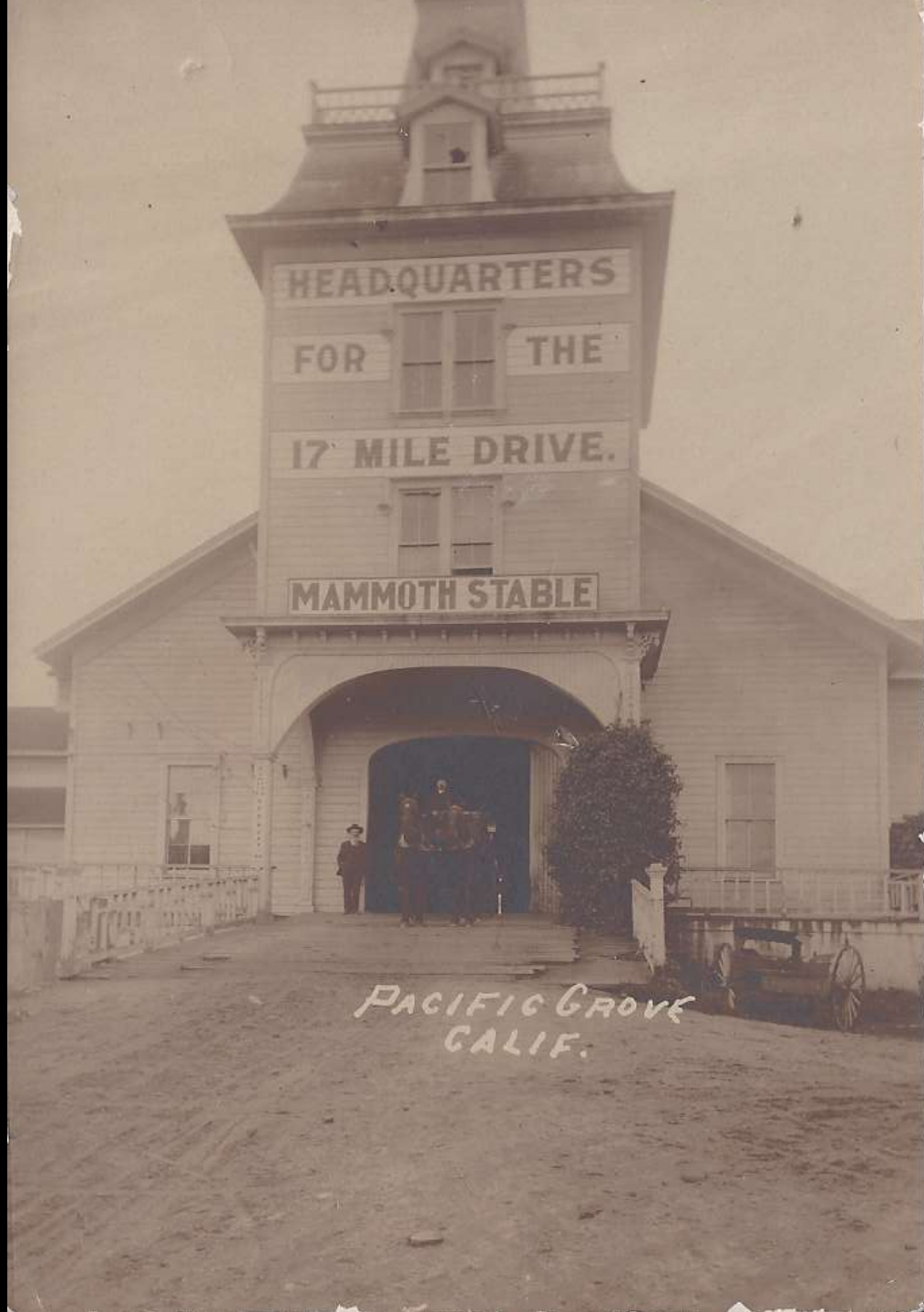
**June 6, 2024**

*NOTE: Photos of the Monterey  
County Museum presented are not  
included in this pdf, as the file  
became too large.*

THE COLLECTION  
OF  
PAT HATHAWAY







HEADQUARTERS

FOR

THE

17 MILE DRIVE.

MAMMOTH STABLE

PACIFIC GROVE  
CALIF.

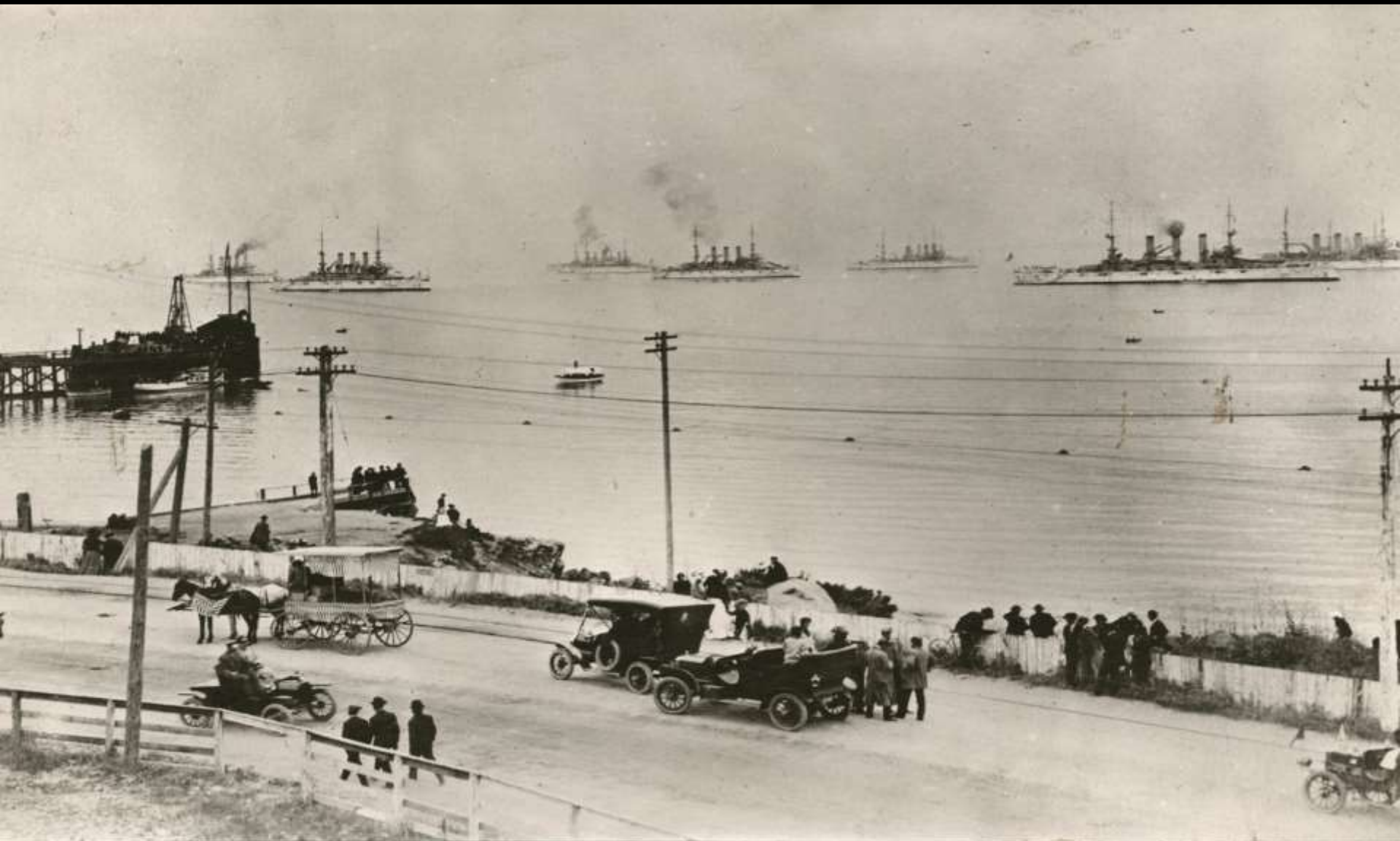












Monterey Bay 1900 - Near Wharf  
Admiral Dewey's Great White Fleet



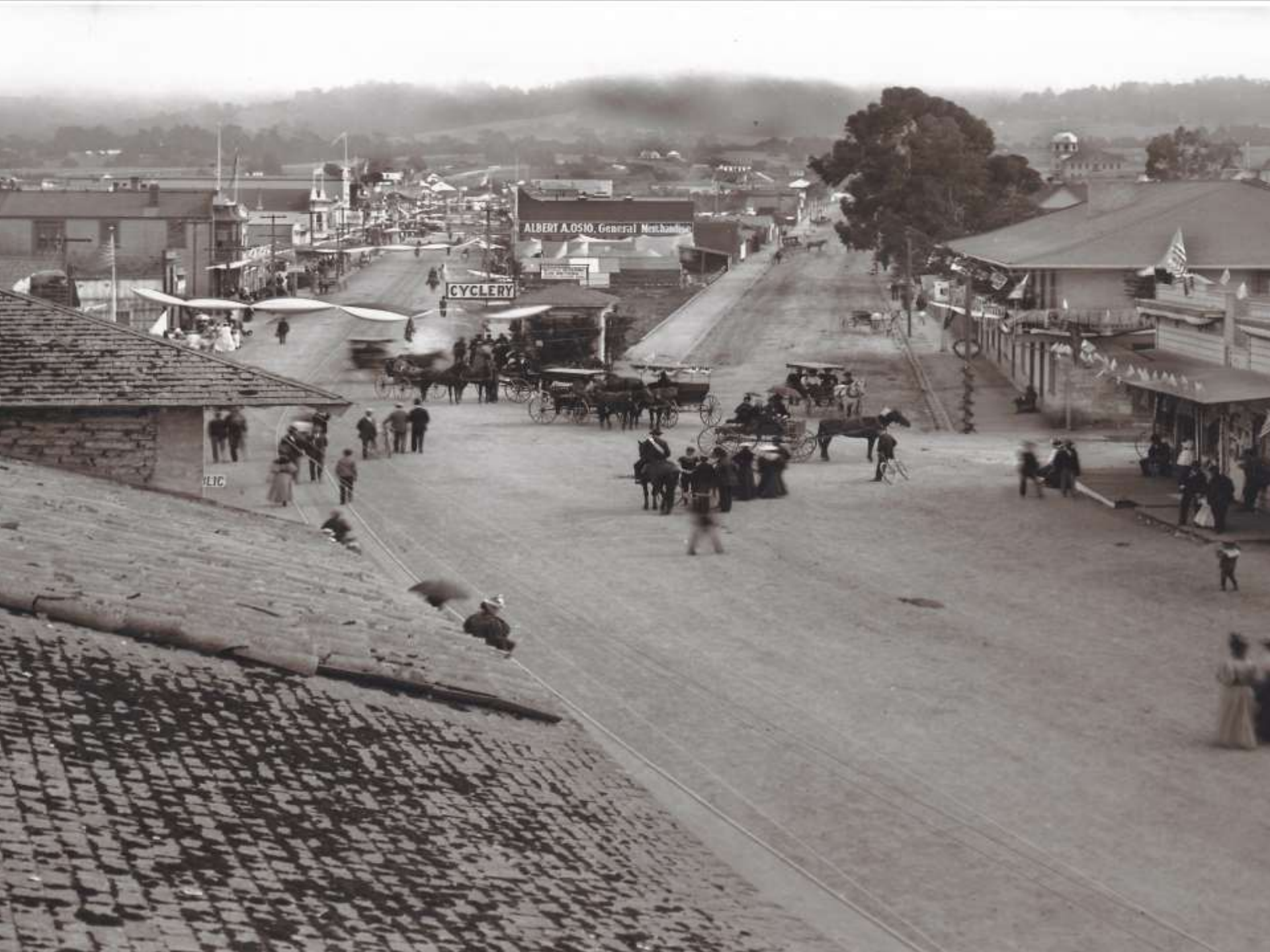
OUTFITTER

THE DEPOT BAR

WESS BERRY

HUGHES





ALBERT A. OSIO, General Merchant

CYCLERY

ELIC



D STREET.  
EY, CALIF.

STATE  
THEATRE

HOSTAGES  
HENRY ALDRICH  
HAUNTS A HOUSE

PHARMACY  
DRUGS &  
SUNDRIES

CREAMERY  
CHRISTENSEN  
ICE CREAM

MEAT MARKET

KA  
MEAT MARKET

RIO  
RESTAURANT  
DINING ROOM

RESTAURANT  
CAFÉ











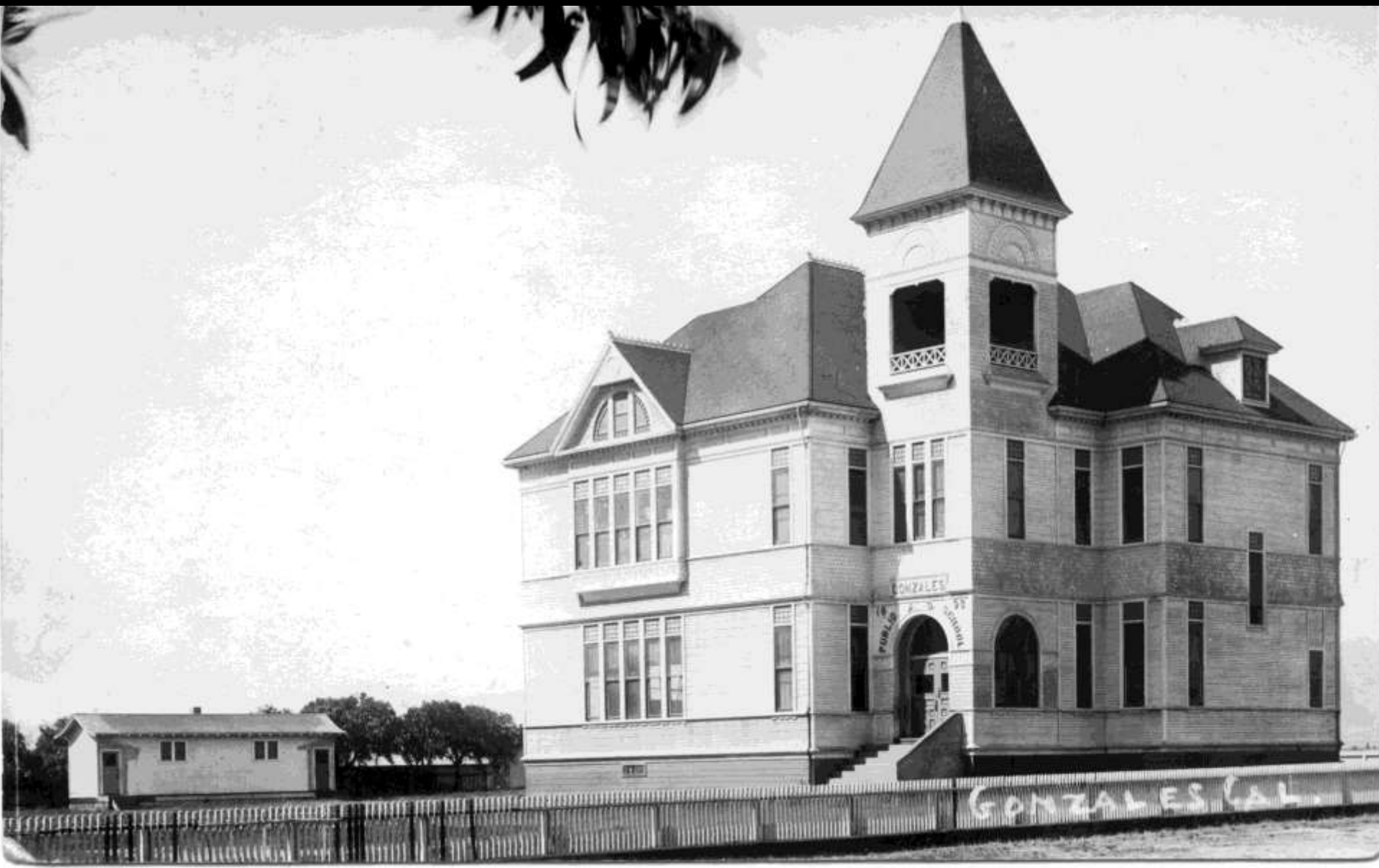




SADDLERY  
WARRANTY

8





GONZALES  
PUBLIC SCHOOL

GONZALES CAL.



WESTERN FLYER

























PENINSULA PACKING CO.

ENTERPRISE PACKERS





M

A  
ES



GRAND OPENING OCTOBER 20th 1984



MONTEREY BAY  
AQUARIUM



GRAND OPENING  
OCTOBER 20th



GRAND  
OPENING  
OCTOBER



GRAND  
OPENING  
OCTOBER

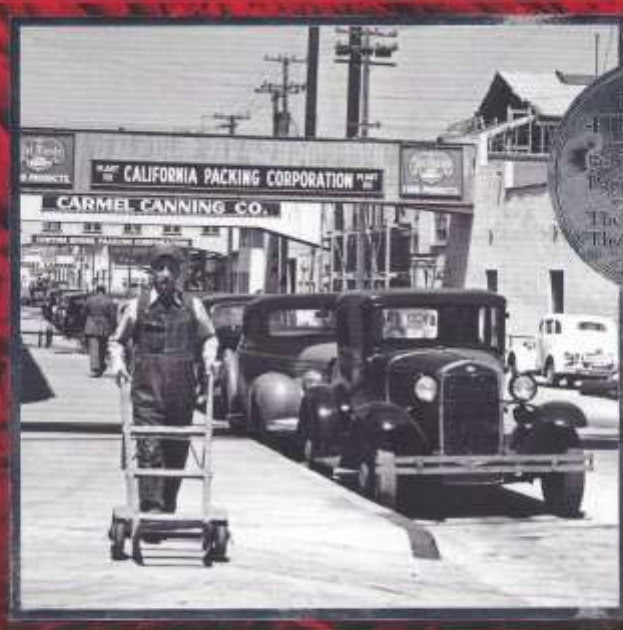


MONTEREY BAY  
AQUARIUM

# CANNERY ROW



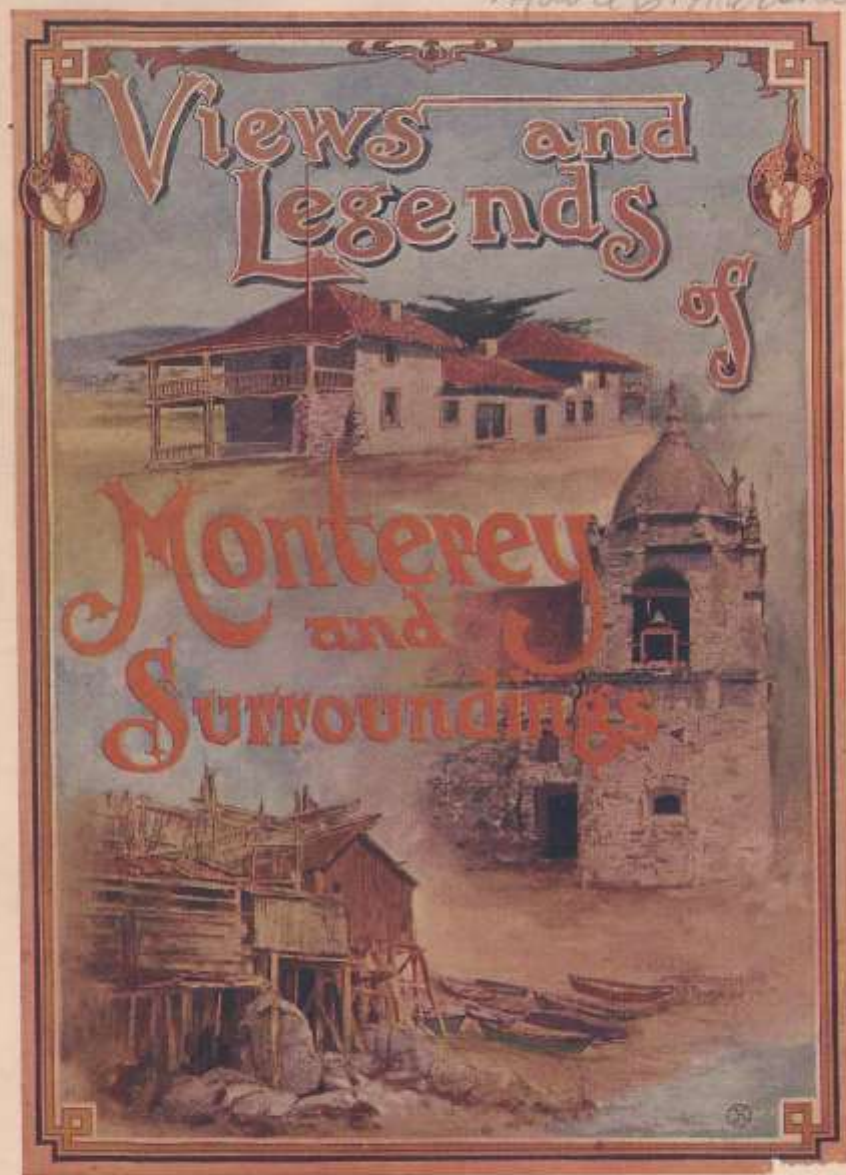
THE HISTORY OF JOHN STEINBECK'S  
OLD OCEAN VIEW AVENUE  
AND ITS CONNECTIONS TO THE PACIFIC NORTHWEST



**MICHAEL KENNETH HEMP**

PHOTOGRAPHY FROM THE  
PAT HATHAWAY HISTORICAL PHOTO COLLECTION

Mable E. Marshall



50

# CARMEL

## 1937



Compliments of  
**Del Monte**  
**Properties Company**  
REAL ESTATE and RENTALS

Ocean Avenue, Carmel, Telephone 1200

# DELMONTE

W E E K L Y

Saturday January Twenty-second  
Nineteen Hundred and Ten



2-

# PACIFIC GROVE CHAUTAUQUA ASSEMBLY.



THIRTY-FIRST SESSION  
JULY 8TH TO 24TH, 1909, INCLUSIVE  
PACIFIC GROVE, CALIFORNIA



*Official Publication*



*The Panama-Pacific  
International Exposition  
at San Francisco 1915*

THIS IS  
**BIG SUR**  
CALIFORNIA



*The Big Sur Coast — Highway 1*

WHAT TO DO . . .

WHERE TO GO . . .

WHAT TO SEE . . .

WHERE TO BUY IT . . .

A detailed map of the Big Sur area, with a complete listing of overnight accommodations, restaurants, camping and trailer facilities, picnic areas, and miscellaneous activities.

30 miles South of Carmel on fabulous Highway 1

Copyright 1963

Published by R. E. Larson, Big Sur, California

# MONTEREY COUNTY California



CARMEL MISSION. A FAMOUS FRANCISCAN OUTPOST





*Carmel-by-the-Sea*











R.A. Cohen



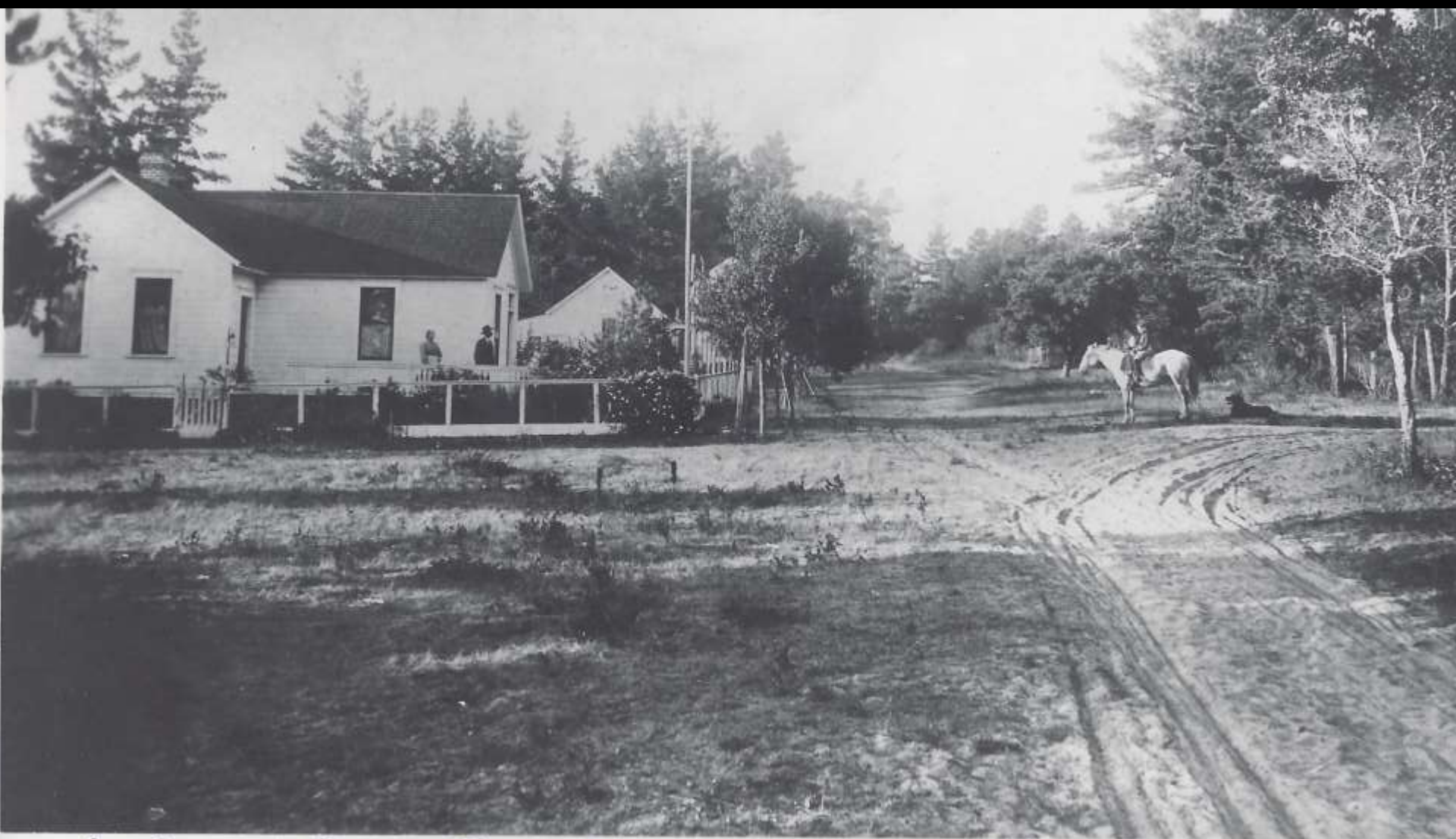


CV # 74-06-0006









6TH + SAN CARLOS LOOKING N UP SAN CARLOS





BURNIGHT'S  
ICE CREAM CANDIES  
CANDY FACTORY

POSTING  
DEVELOPING  
& PRINTING

LOUIS S. SLEVIN.

CURIOUS  
MAGAZINES  
P.O.

POST OFFICE.

1917

Two people standing on the porch of the main building.





CARMEL'S FIRST FIRE  
ENGINE. IN SERVICE 1915  
VOTE YES  
FOR FIRE HOUSE.  
SECTION MAR. 3rd.

FIRE  
HOUSE

FIRE  
HOUSE  
NO PARKING

1918





...re, during the 1st ... David  
MER, L. S. Slevin      DATE, 07/1910





C. More Curtis, Carmel, Cal.







CARMEL, CAL. LIBRARY LINC





**SIGN  
WRITING.**



MRS HANIQUE -- CARMEL, CAL. SEP. 1922



PHOTOGRAPHER, L. S. Slevin

DATE, ca 1930





RESTAURANT

GROCERIES

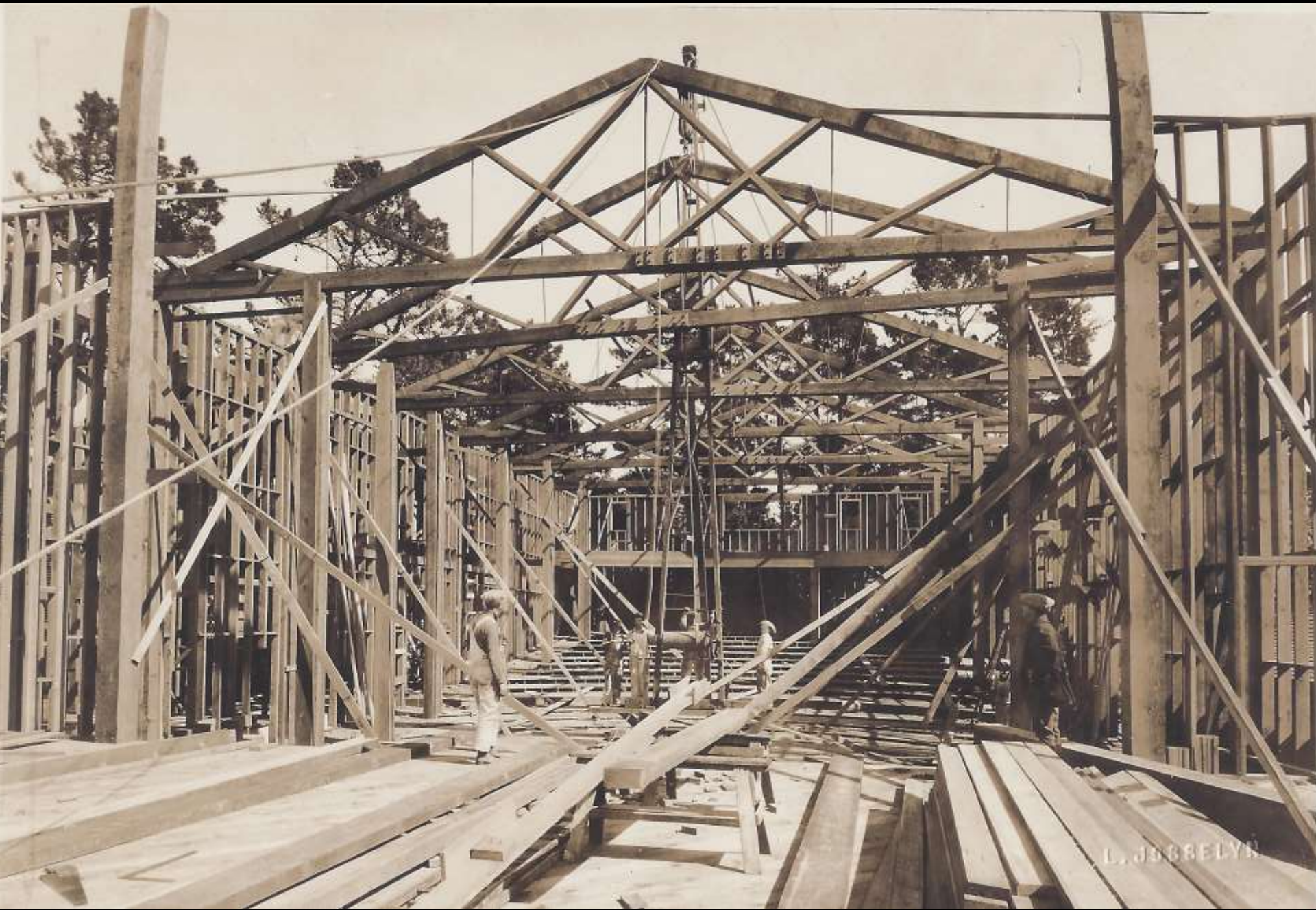












L. J. BREEDY

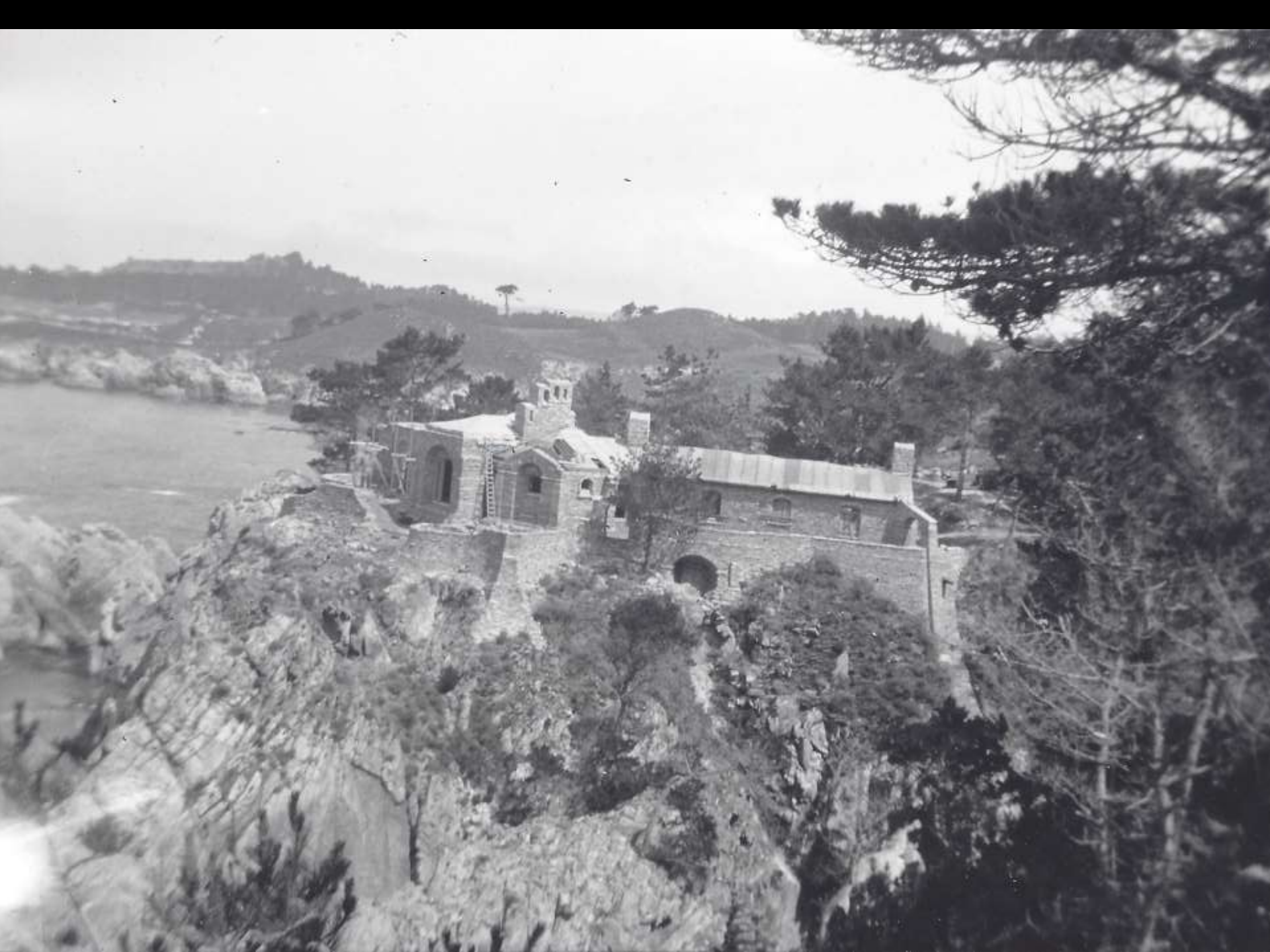


JOSSELYN













CARMELITE MONASTERY,  
CARMEL-BY-THE-SEA, CAL.



















# CARMEL DAIRY

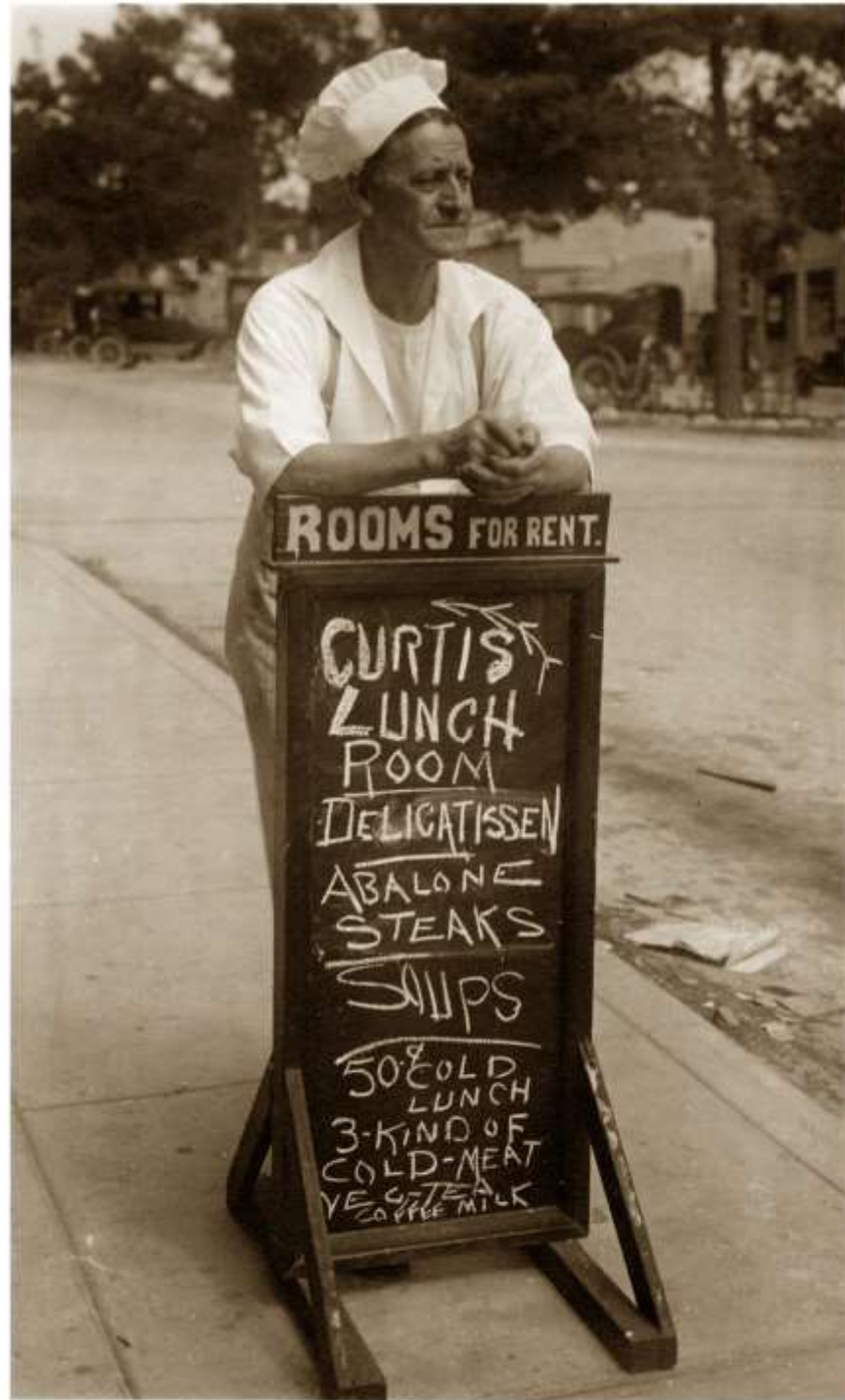


MURALS BY JO MORA



CARMEL DAIRY MURALS BY JO MORA





ROOMS FOR RENT.

CURTIS  
LUNCH  
ROOM

DELICATISSEN

ABALONE  
STEAKS

SOUPS

50¢ COLD  
LUNCH  
3-KIND OF  
COLD-MEAT  
YE <sup>C</sup>TEA  
COFFEE MILK









